



---

# Gallagher

## SMB T11 Reader

### Installation Note

Gallagher SMB T11 Reader, Black: C500430

Gallagher SMB T11 Reader, White: C500431

---



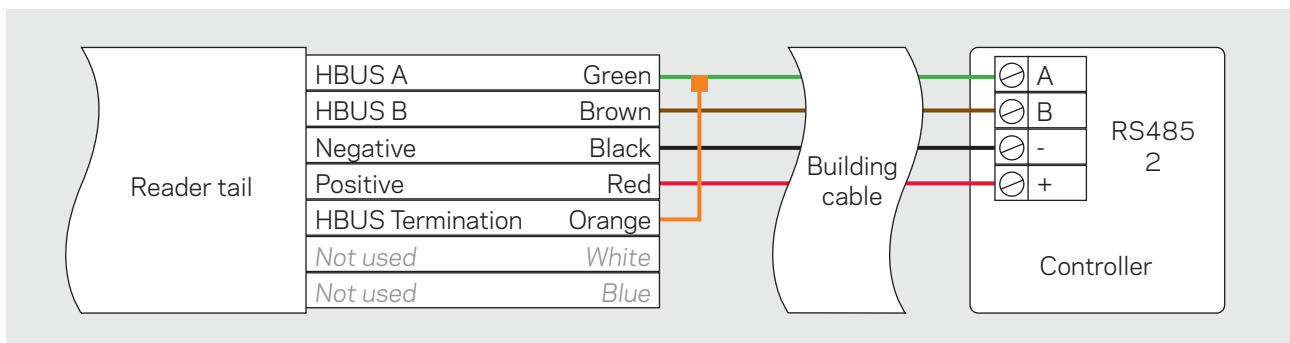
## Introduction

The Gallagher SMB T11 Reader can be configured as an arming reader or access reader. The reader allows users to arm, disarm, or request access at a locked door with a smartphone (via Bluetooth® or NFC) or a Gallagher SMB Key Tag.

## Connections

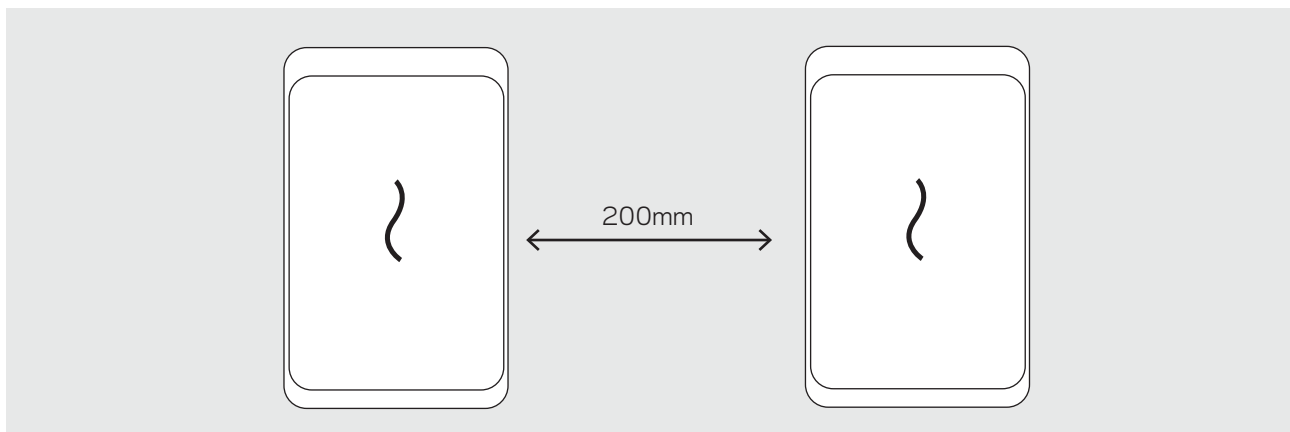
The HBUS communications protocol allows a single reader to communicate over a distance of up to 500m (1640ft) from the controller, when using data only in a single CAT5E cable. Cabling should be a minimum size of 0.2mm<sup>2</sup> (24AWG). The cabling between HBUS devices should be done in a "daisy chain" topology, (i.e. a "T" or "Star" topology should not be used between devices).

Connect the reader tail to the building cable. If the reader is the last device on the run, terminate the reader by connecting the Orange wire to the Green wire.



## Distance between readers

The distance separating any two readers must not be less than 200mm (8") in all directions. When mounting the reader on an internal wall, check that any reader fixed to the other side of the wall is not less than 200mm (8") away.



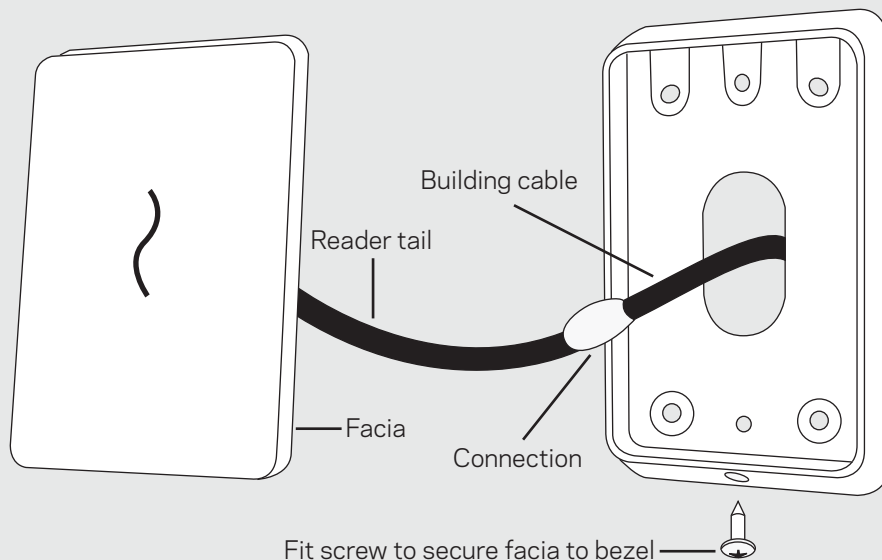
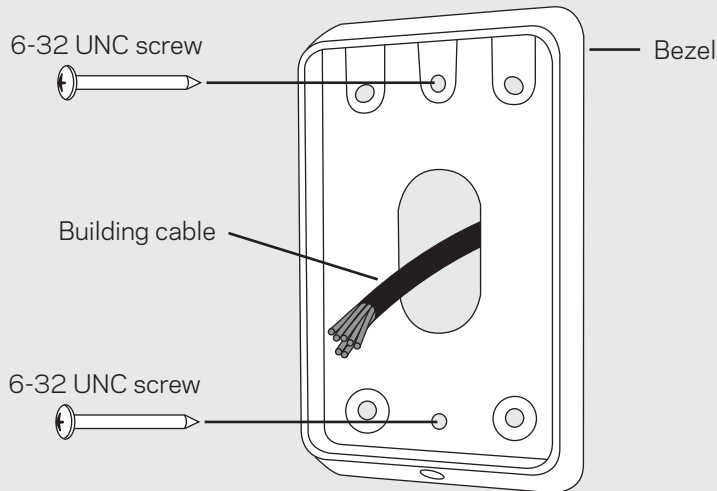
## Installation

The reader is designed to be mounted on vertically orientated electrical flush (gang) boxes, or any solid flat surface. Installation on metal surfaces, particularly those with a large surface area will reduce read range. The extent to which the range is reduced will depend upon the type of metal surface.

The recommended mounting height for the reader is 1.1m (3.6ft) from the floor level to the centre of the reader. However this may vary in some countries and you should check local regulations for variations to this height.



**ATTENTION:** This equipment contains components that can be damaged by electrostatic discharge. Ensure both you and the equipment are earthed before beginning any servicing.



## Bluetooth® connection settings

Environmental factors (e.g. metal surfaces) will affect the reader's Bluetooth® performance. The following Bluetooth® connection settings can be adjusted to improve the user's phone performance when communicating with the reader.

These settings are adjusted in the SMB Installer Portal on the Reader's Properties tab.

### Transmit Power

Increasing the Transmit Power will increase the readers Bluetooth® read range. Adjusting this range will increase both the Door Connection and Local Arming ranges. The default value is -26dBm (decibel-milliwatts).

### Door Connection Range

This is the range at which the customer's Bluetooth® device will automatically connect to the reader and grant access to the user if the user has access privilege to the area the door is associated to. The default value is 45dBm (decibel-milliwatts) and must always be less than the value set for the local arming range.

### Local Arming Range

This is the range within which the user can manually connect their Bluetooth® device to the reader to arm or disarm their alarm system. The default value is 64dBm (decibel-milliwatts).



