

eShepherd Mobile App

Table of Contents

1	Introduction.....	2
2	Installation of the App	2
3	Turning Virtual Paddocks ON and OFF	3
3.1	How to switch between managing mobs or animals.....	3
3.2	Turn ON Virtual Paddock.....	4
3.3	Turn OFF Virtual Paddock	5
4	Connecting a phone to a Handheld EID Reader	6
4.1	Apple iOS.....	6
5	Using the Phone to Associate Neckbands to Animal EID Tags	7

1 Introduction

The eShepherd mobile app can be used to

- monitor the location of animals
- turn on or off virtual paddocks
- receive notifications and alerts from the eShepherd platform
- associate Neckbands to Animals.

This feature requires a handheld EID reader to scan the EID tag of the animal and to scan the EID tag inside the Neckband to create the 'pairing' or 'association'.

2 Installation of the App

Follow these instructions to install the eShepherd Mobile App.

1. Open the **App Store** or **Google Play Store** on your mobile phone
2. Search for "**eShepherd**" in the store's search bar
3. Tap the "**Download**" or "**Install**" button
4. Once downloaded, tap "**Open**" from the store or find the app icon on your home screen
5. Login with your regular **email** and **password**. **The same one you use** with the Web App on your desktop PC or Laptop.

You can also download the app directly from the App Store or Google Play Store or use the following links:

- App Store (iOS): <https://apps.apple.com/app/eshepherd/id6497067513>
- Google Play Store (Android):
<https://play.google.com/store/apps/details?id=com.gallagher.am.mobile.android.eshepherd>

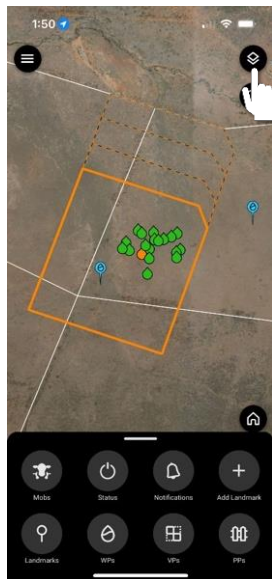
3 Turning Virtual Paddocks ON and OFF

You can turn virtual paddocks **on** and **off** for both mobs and animals.

3.1 How to switch between managing mobs or animals

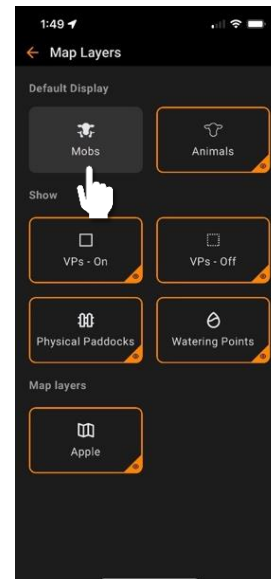
1. Open Layers

- Tap the “Layers” button located at the top right corner of the screen.



2. Select Layer

- In the Layers screen, tap on either the “Mobs” layer or the “Animals” layer to choose the one you want to manage

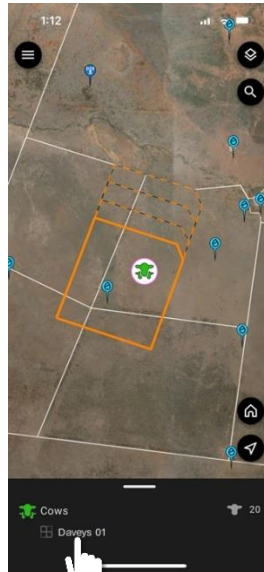


3.2 Turn ON Virtual Paddock

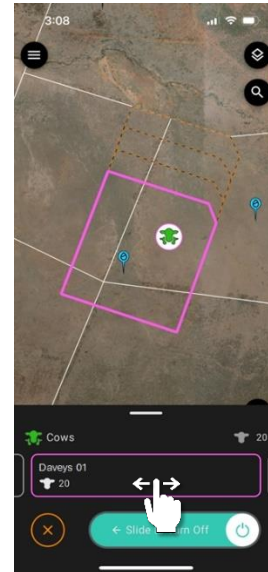
1. Tap on a Mob icon on the map to select it



2. Tap on the Virtual Paddock name



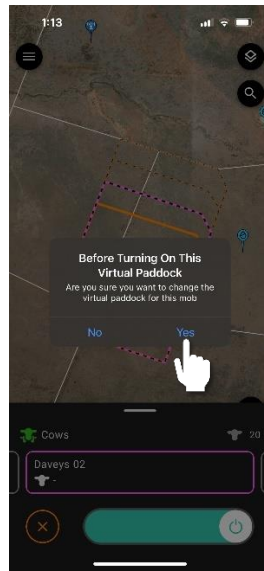
3. Swipe left/ right to select a VP



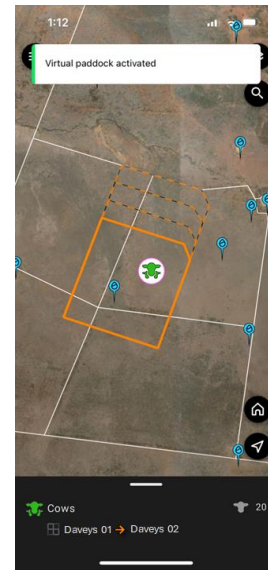
4. Now slide the toggle to turn the Virtual Paddock on.



5. Tap "Yes" to confirm VP activation

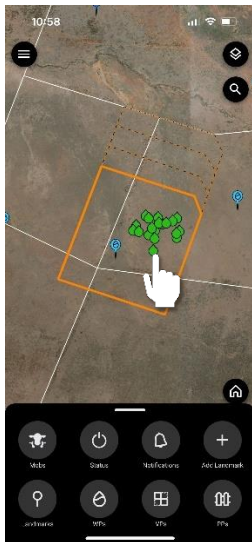


6. Done



3.3 Turn OFF Virtual Paddock

1. Tap on an Animal icon on the map to select it



2. Tap on the Virtual Paddock name



3. Now slide the toggle to turn the Virtual Paddock off.



4. Tap “Yes” to confirm VP activation



5. Done



*This example uses “Animals” layer as a default layer.
[To make mob icons visible on your map, please change the default layer to mob.](#)

4 Connecting a phone to a Handheld EID Reader

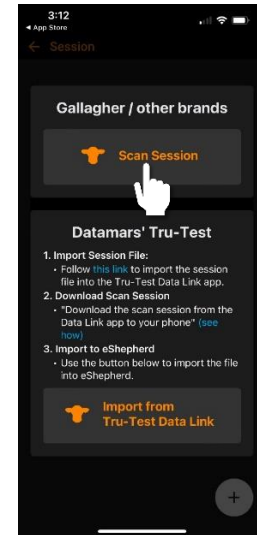
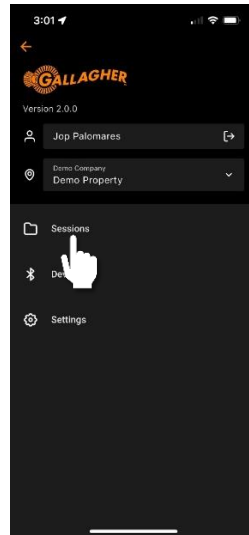
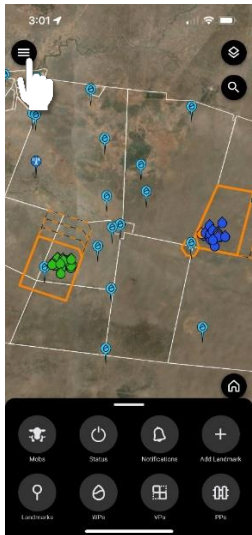
4.1 Apple iOS

Follow these steps to connect your iPhone to the EID Reader

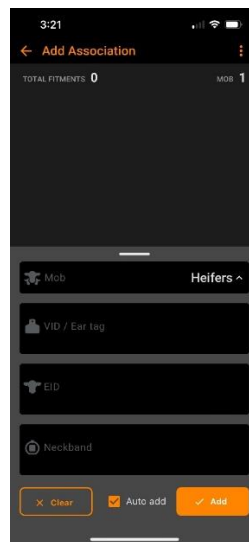
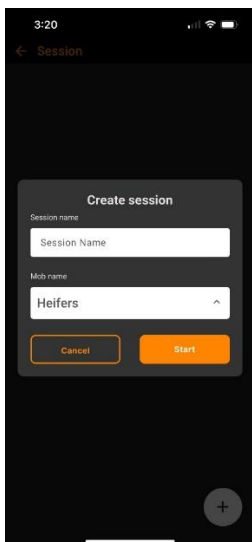
- First, on your iPhone, open the eShepherd App.
- Then on the HR5, from the 'Main Menu' page, go to the 'Wireless' menu
- Choose Wi-Fi (not Bluetooth). Leave this menu open, while you prepare your mobile phone.
- On your iPhone, go to Settings -> Wi-Fi. Now go back to the EID Reader...
- On the HR5, press 'Search'
- On the iPhone, an HR5-xxxxxxxx device will appear. Select this.
- The iPhone will now connect to the HR5 reader.
- Close the Settings App, and go back to the eShepherd App.
- The HR5 device will now appear in the Devices menu.

5 Using the Phone to Associate Neckbands to Animal EID Tags

1. From the Map view, tap on the Menu icon in the top left
2. Select Sessions
3. You can create a new Session or import a file from a Tru-Test device by tapping on the + icon in the bottom right



4. Enter a Session Name, select or Add new Mob and then press **Start**
5. You are now ready to start Neckband Association



Every time the EID reader scans either a Neckband or Animal EID (NLIS) tag, it will automatically put that number into the corresponding field.

If you have Auto Add ticked, then as soon as both numbers are present, the association record will automatically be added to the Session, and you are ready to create the next association.

Note, you can create multiple Sessions (recommended) when working through a large number of animals. If you take a break at any time, simply finish your Session by clicking on the back arrow (top left) and start a new Session when you resume.